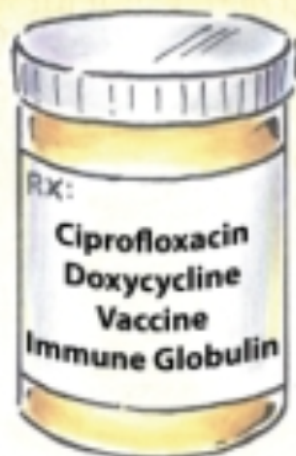


# Anthrax

(Woolsorter Disease)



Wide Mediastinum

**Meningeal**  
Hematogenous Spread

ARDS  
Pulmonary Edema

**Pulmonary/Inhalation**  
Fever, Chest Pain, SOB  
Most Lethal

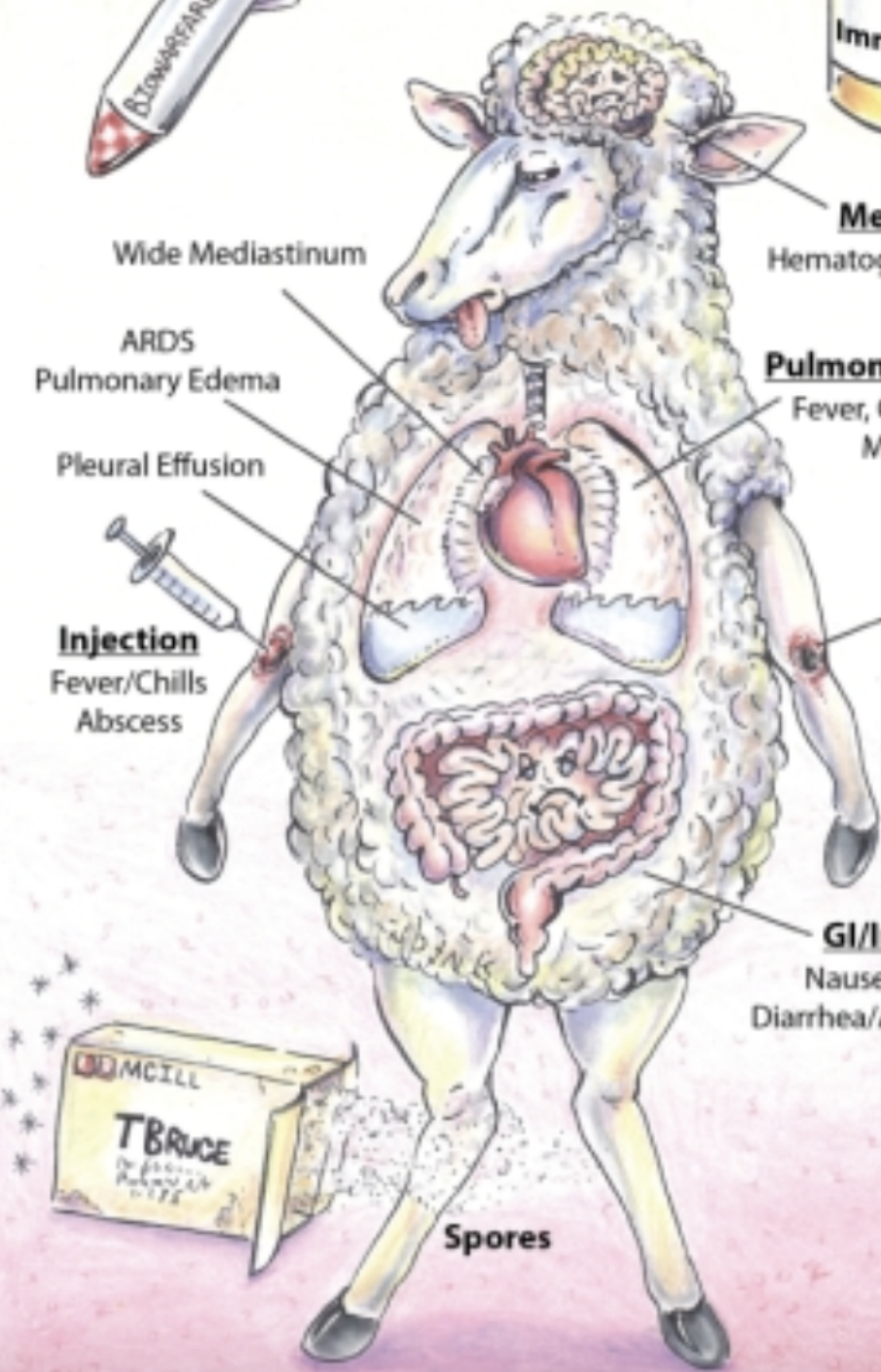
Pleural Effusion

**Injection**  
Fever/Chills  
Abscess

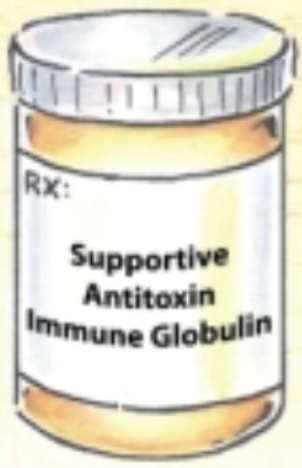
**Cutaneous**  
≈ 95% Cases  
Painless Ulcer  
Black Eschar

**GI/Intestinal**  
Nausea/Vomiting  
Diarrhea/Abdominal Pain

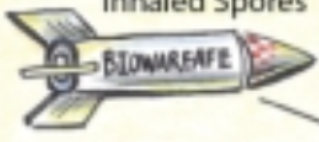
Spores



# Botulism

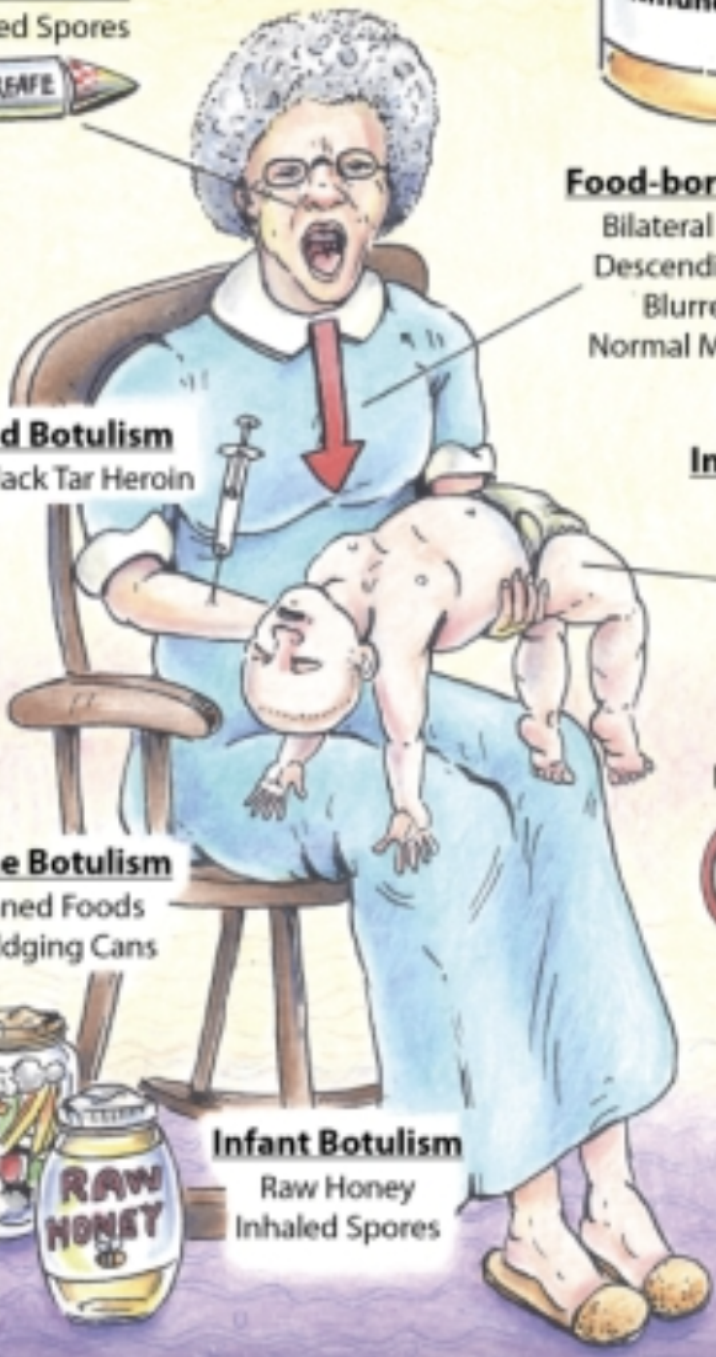


**Bioterrorism**  
Inhaled Spores



**Food-borne Botulism**  
Bilateral Facial Palsy  
Descending Paralysis  
Blurred Vision  
Normal Mental Status

**Wound Botulism**  
IM/SQ Black Tar Heroin



**Infant Botulism**  
Floppy Baby  
Constipation  
Weakness  
Poor Feeding  
Weak Cry  
Drooling



**Food-borne Botulism**  
Home Canned Foods  
Dented/Bulging Cans



**Infant Botulism**  
Raw Honey  
Inhaled Spores



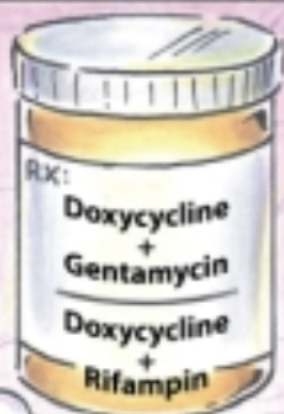
# Brucellosis

(Mediterranean Fever)

(Malta Fever)

(Undulant Fever)

S	M	T	W	T	F	S
Incubation: 5 days – 5 Months						
Average: $\approx$ 1–4 Weeks						
Can Relapse						
Can Be Chronic						



*B. melitensis*



*B. suis*



*B. abortus*



*B. canis*



Headache



Pneumonia

Sacroiliitis

Epididymo-orchitis

Myalgia

Meningitis



Endocarditis

Hepatitis

Arthralgia

Spontaneous Abortion



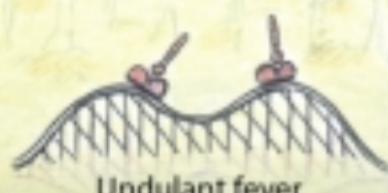
Dizziness



Fever Fatigue

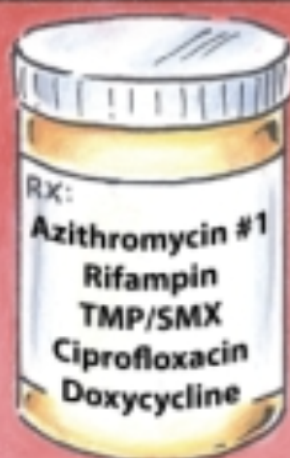


Weakness



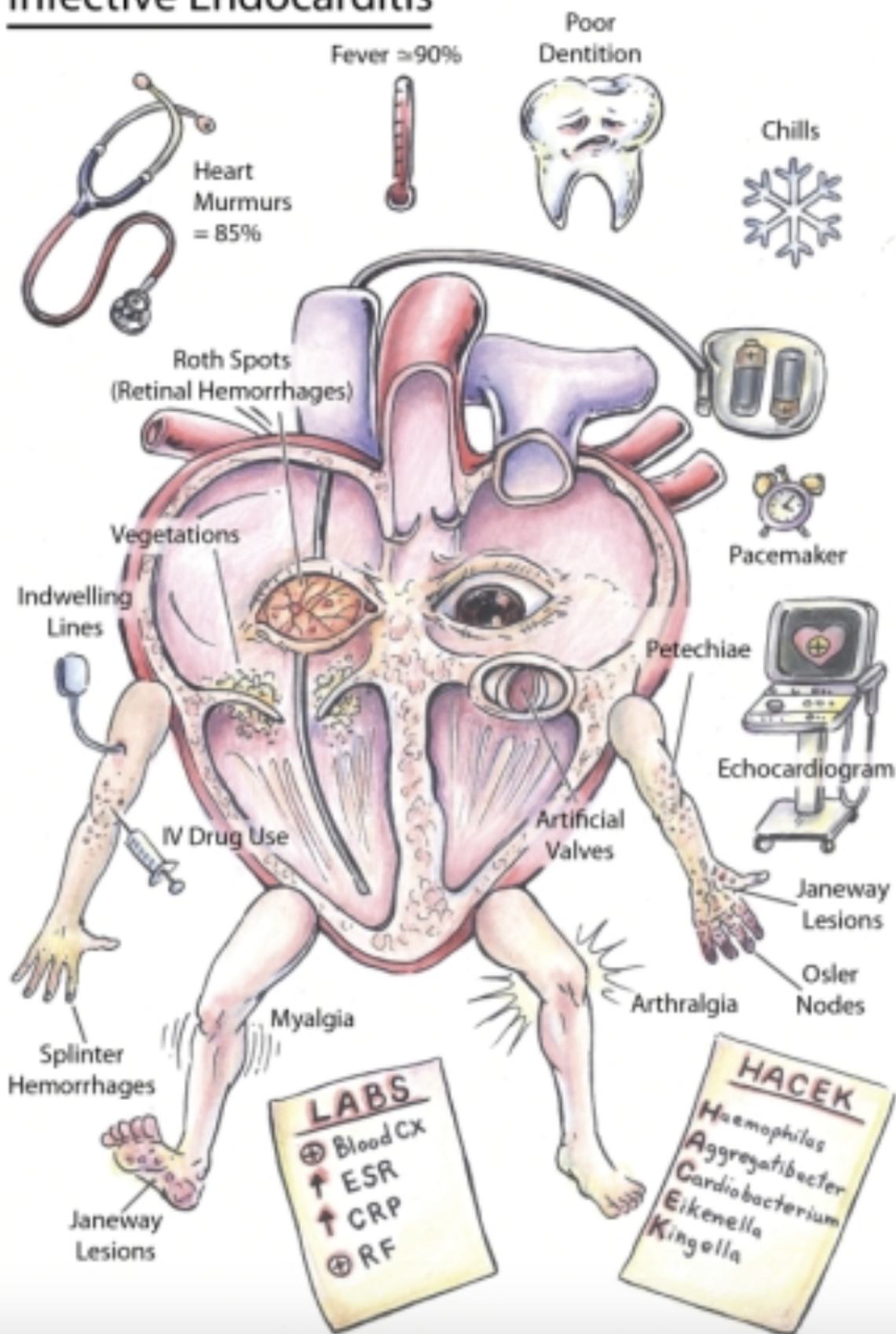
# Cat Scratch Fever

S	M	T	W	T	F	S
Incubation: 1-2 Weeks						
Papule at Inoculation Site						
Often Self-limiting						





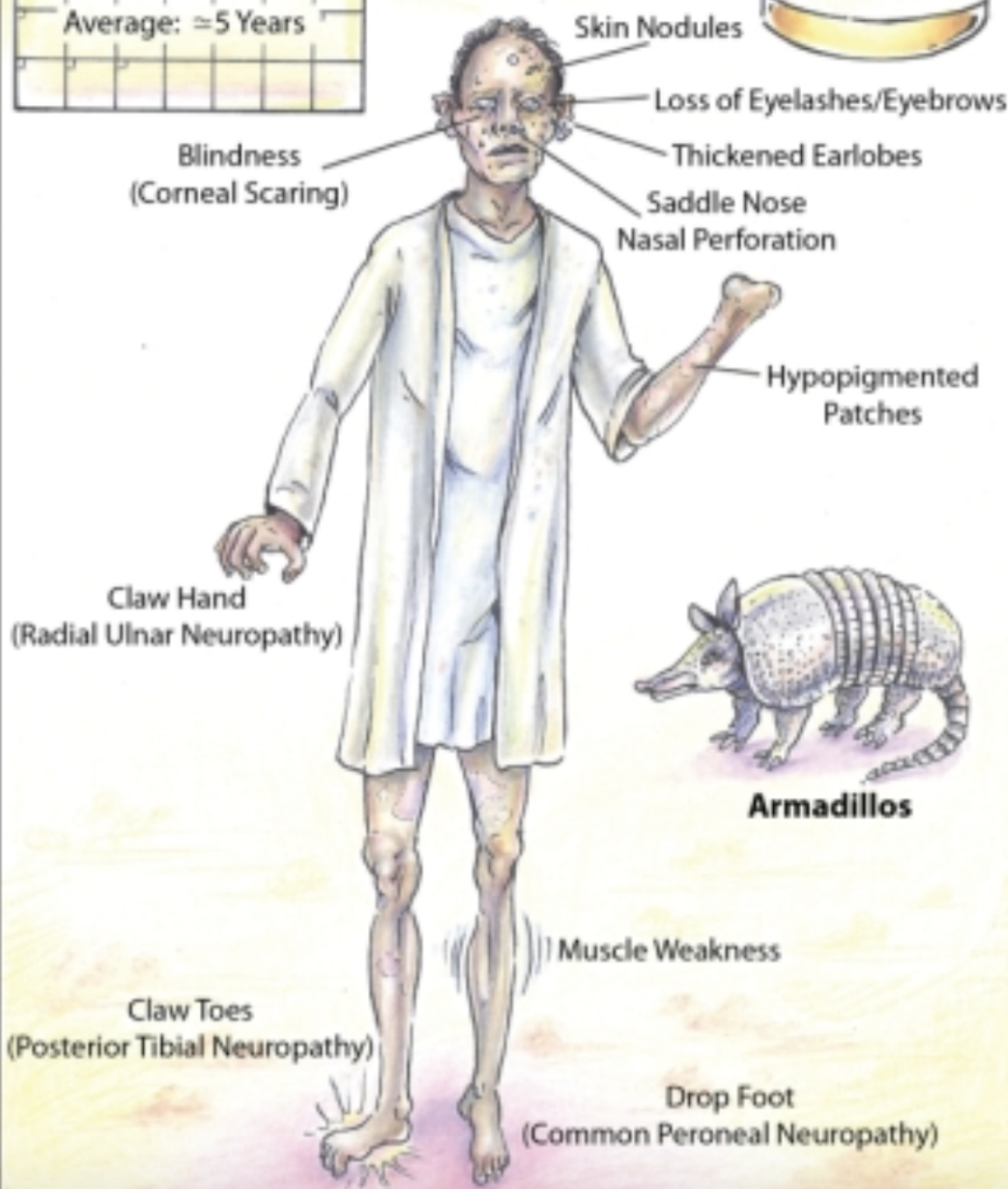
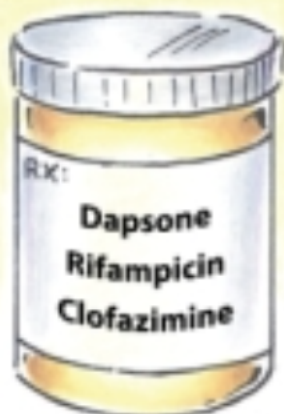
# Infective Endocarditis



# Leprosy

(Hansen Disease)

S	M	T	W	T	F	S
Incubation: 9 Months - 20 Years						
Average: ≈5 Years						



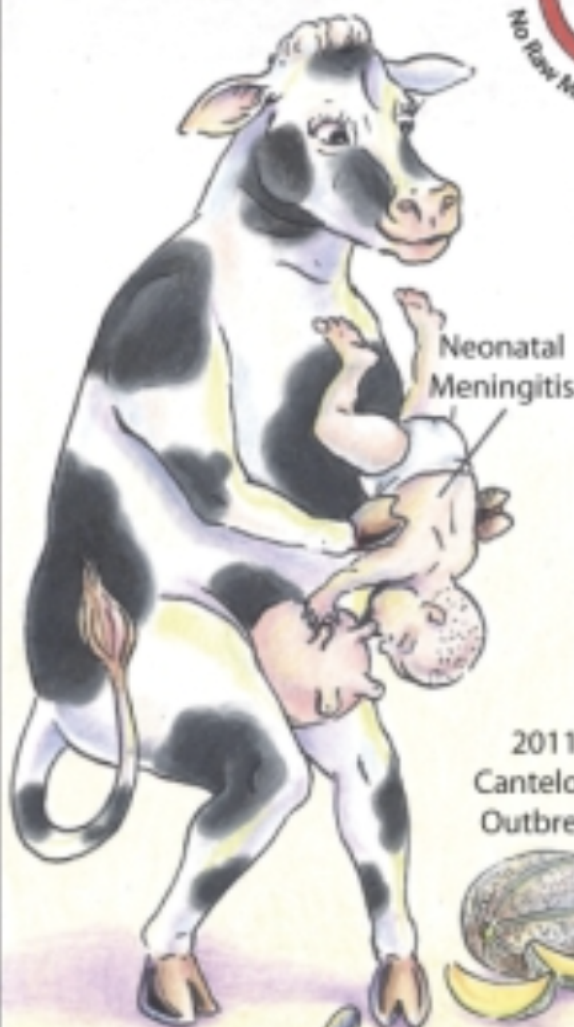
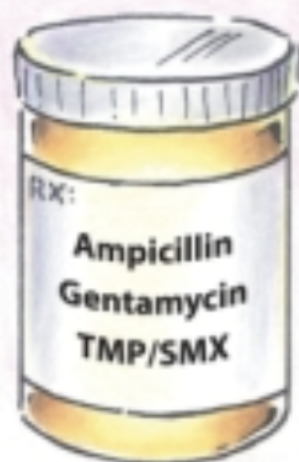
**Armadillos**



# Listeriosis

(Listeria)

S	M	T	W	T	F	S
Incubation: Varied						



Listeriosis		
GI	→	Nausea Vomiting Fever Myalgia Diarrhea
Pregnant Female (≈30% of cases)	→	Flu-like Symptoms Possible Miscarriage Possible Stillbirth
Infection of Newborns	→	Sepsis Meningitis Granulomatosis infantiseptica
Immune Compromised (Extremes of Age)	→	Fever Myalgia Sepsis Abscesses Meningitis Seizures

2011 Cantelope Outbreak



Young Cheese

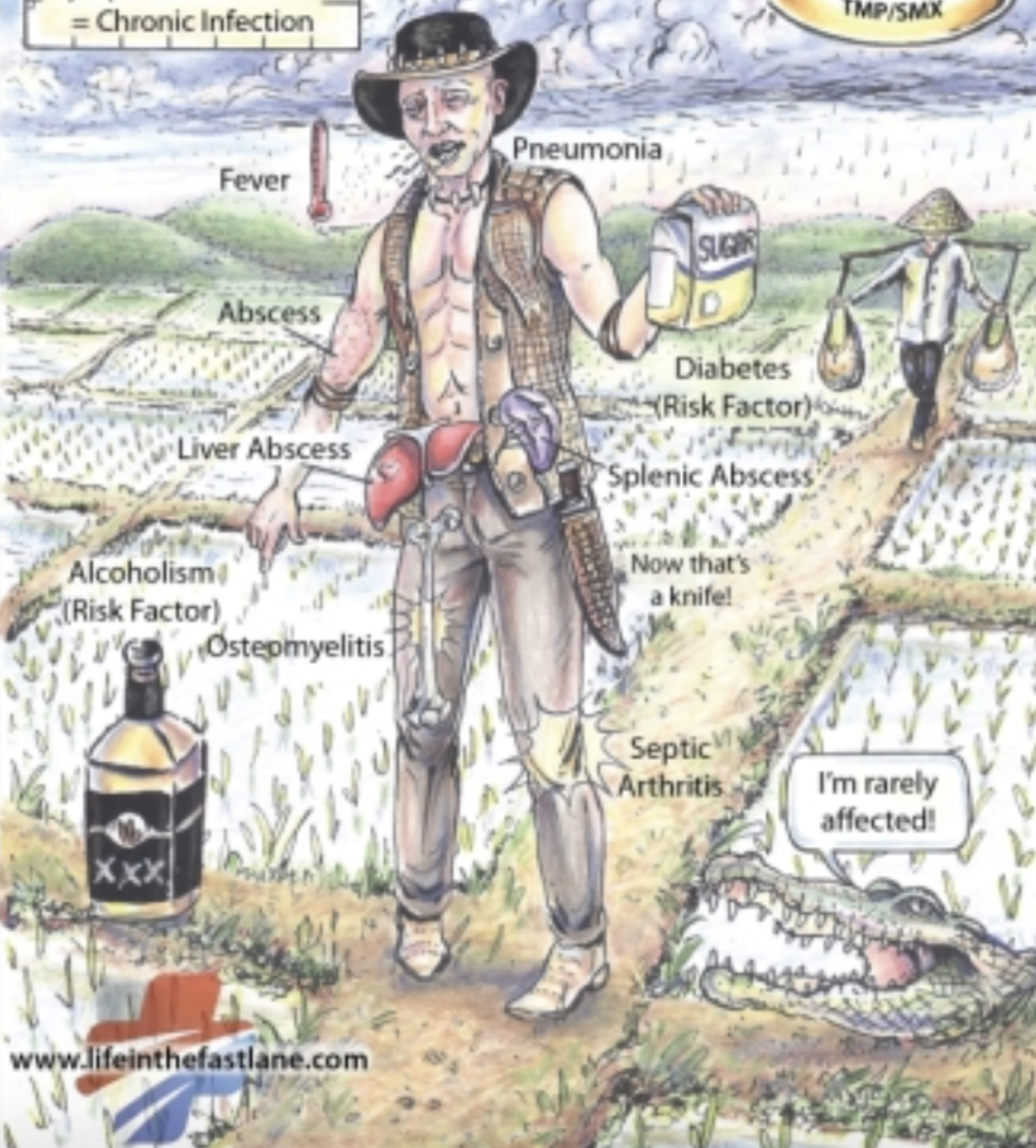
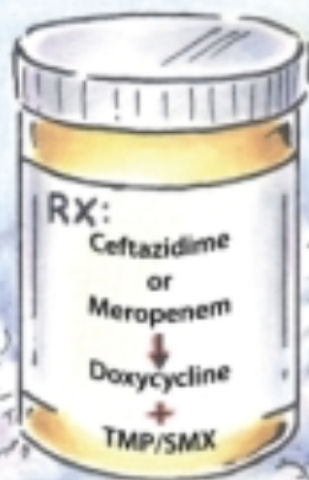


# Melioidosis

(Pseudoglanders)

(Whitmore Disease)

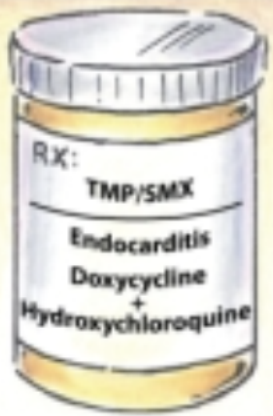
S	M	T	W	T	F	S
Incubation: 1-21 Days						
Average: ≈9						
≈10% Become Chronic						
Symptoms >2 months = Chronic Infection						





# Q Fever

S	M	T	W	T	F	S
Incubation: 2-3 Weeks Can Become Chronic						



Headache

Animal Workers

Fever



Flu-like  
Illness

Cough

Pneumonia

Myalgia

Inhaled  
Spores

Semen  
Vaginal Mucus

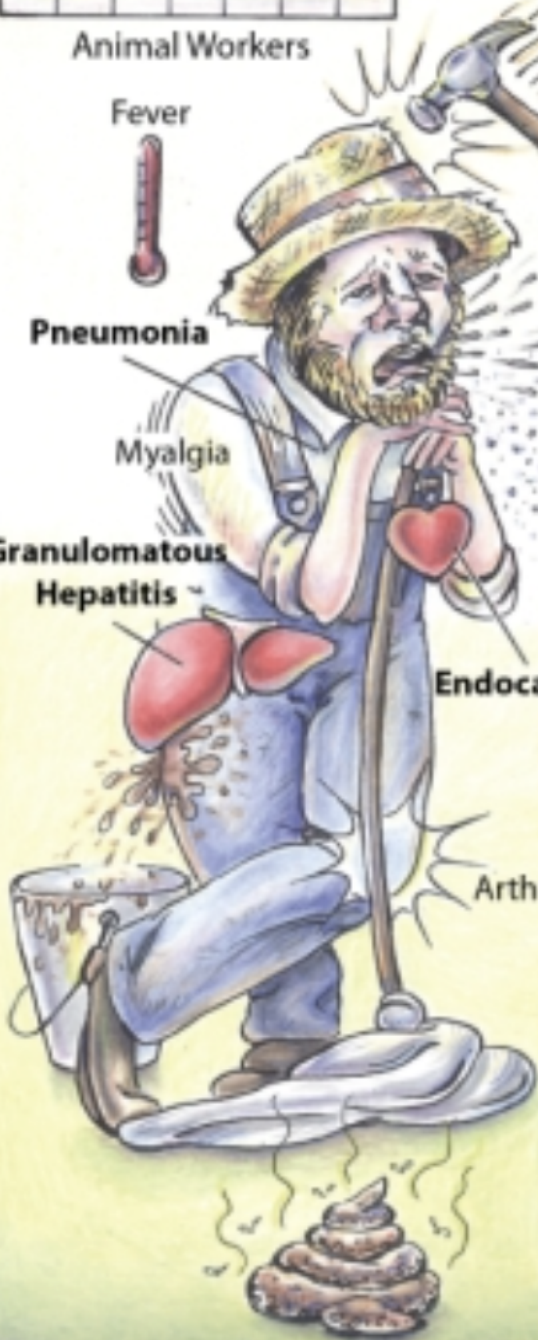
Granulomatous  
Hepatitis

Endocarditis

Arthralgia

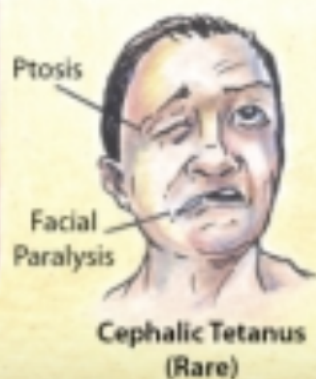
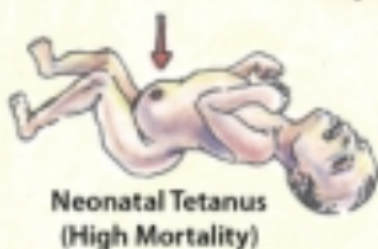
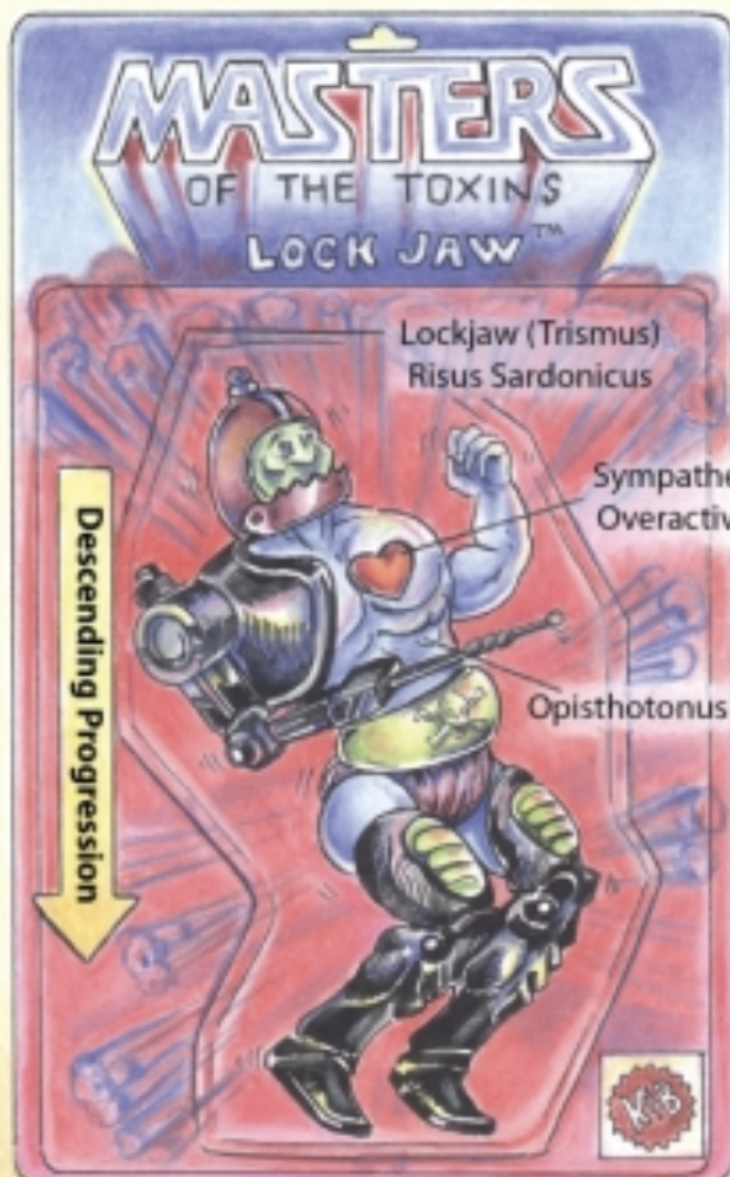
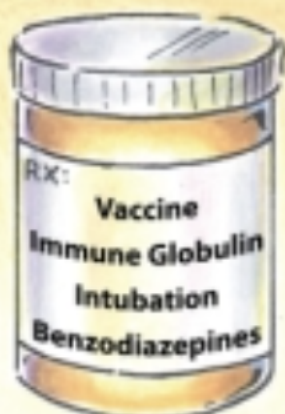
Urine

Feces



# Tetanus

(Lockjaw)

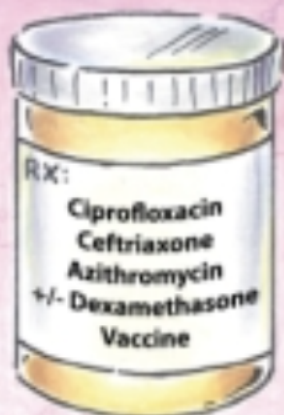




# Typhoid Fever

(Enteric Fever)

S	M	T	W	T	F	S
Incubation: 6-30 Days						



## Disease Progression



Progressive Fever Chills

Relative Bradycardia  
Temp  $\uparrow$  = HR  $\downarrow$

Cough Malaise   
Abdominal Pain

Rose Spots on  
Chest and Abdomen

**ZZZ** Severe Fatigue

Delerium ?

Constipation/Diarrhea

Hepatosplenomegaly

GI Bleed

GI Perforation



My peach melba  
is to die for!

### Paratyphoid Fever

S. enterica  
Paratyphi A  
Paratyphi B  
Paratyphi C



Fecal-Oral  
Transmission



Chronic Carriers