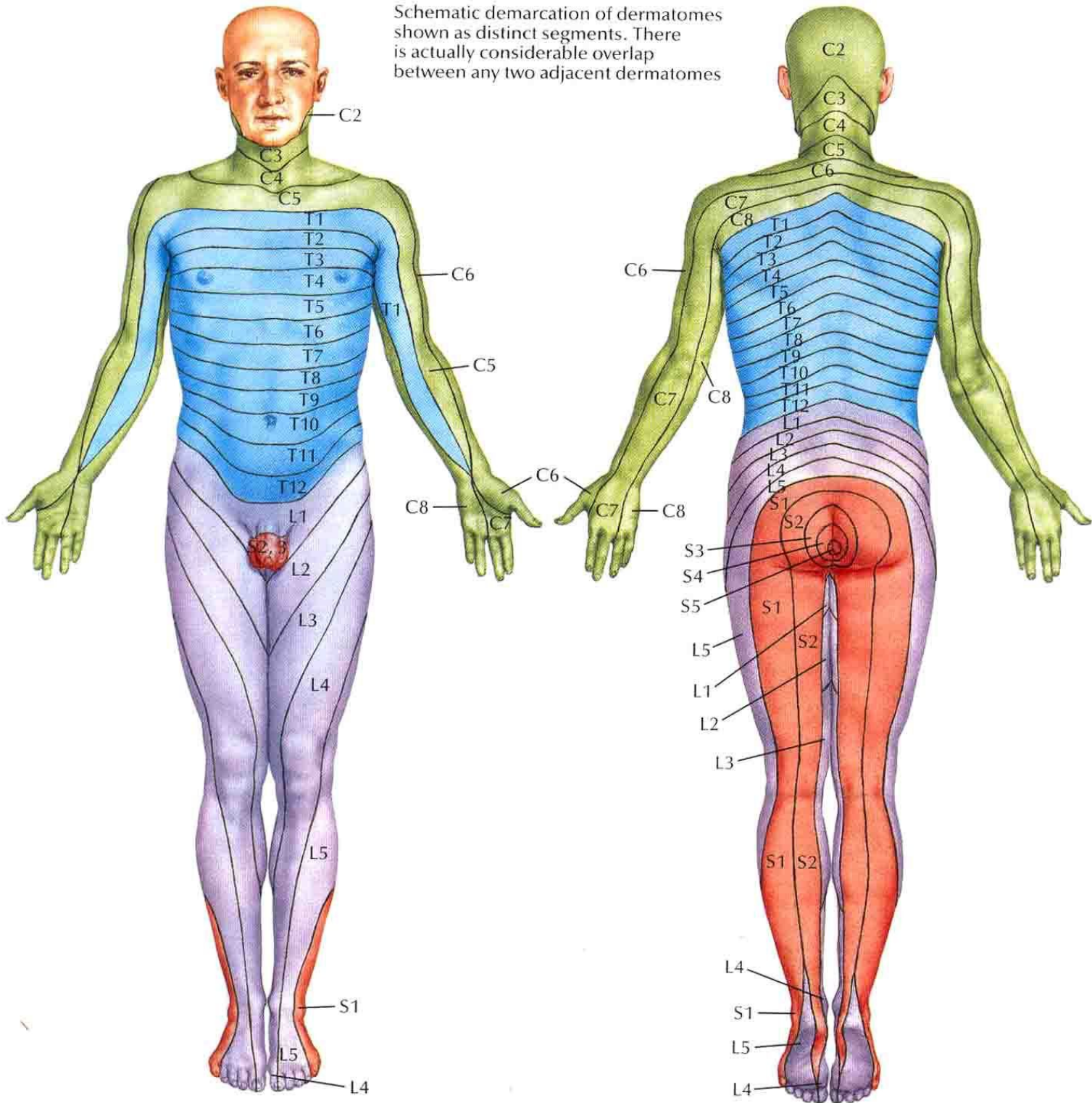


Schematic demarcation of dermatomes shown as distinct segments. There is actually considerable overlap between any two adjacent dermatomes



Levels of principal dermatomes

- C5 Clavicles
- C5, 6, 7 Lateral parts of upper limbs
- C8, T1 Medial sides of upper limbs
- C6 Thumb
- C6, 7, 8 Hand
- C8 Ring and little fingers
- T4 Level of nipples

- T10 Level of umbilicus
- T12 Inguinal or groin regions
- L1, 2, 3, 4 Anterior and inner surfaces of lower limbs
- L4, 5, S1 Foot
- L4 Medial side of great toe
- S1, 2, L5 Posterior and outer surfaces of lower limbs
- S1 Lateral margin of foot and little toe
- S2, 3, 4 Perineum