

# Avian Influenza

Read  
**CHEW**<sup>TM</sup>  
[www.ChevComics.com](http://www.ChevComics.com)



(No Sustained  
Human-to-Human  
Transmission)

Cough

Myalgia

**Avian Flu in Humans**

High Incidence of  
Severe Pneumonia!

Coughing  
Sneezing

Infected birds  
must be eradicated!

Nasal Discharge

Purple Discoloration of the  
Head, Comb, Wattles  
Eyelids, Hock

**Avian Flu in Chickens**

Decreased Egg  
Production

R.I.P.  
60%  
Mortality  
in  
HUMANS.



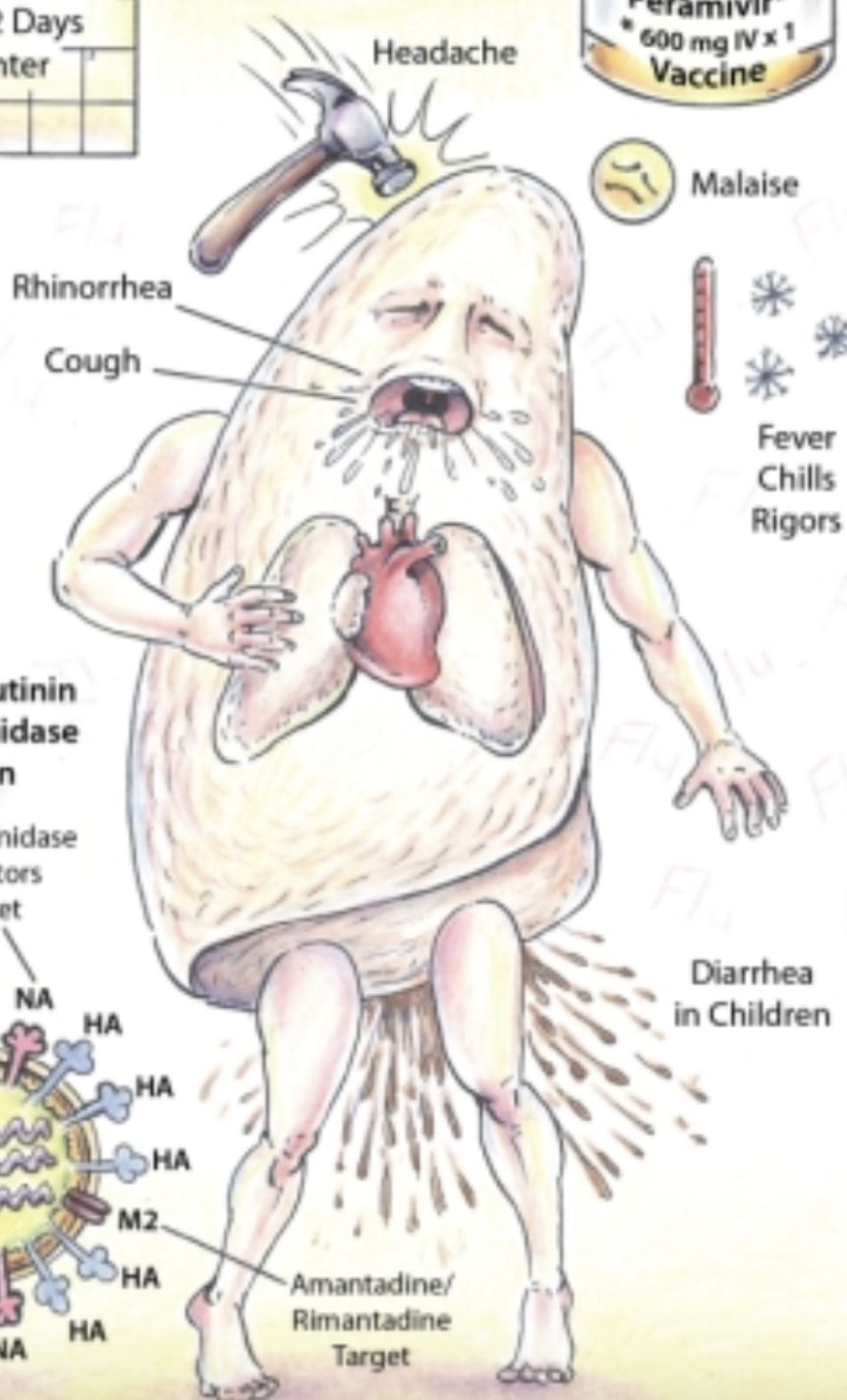
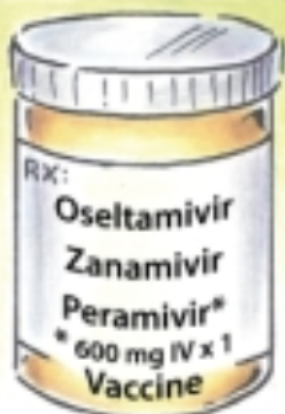
Diarrhea

Abnormal  
Egg  
Shape

# Influenza

## "The Flu"

S	M	T	W	T	F	S
Incubation: 1-4 Days						
Average: ≈ 2 Days						
Peak: Winter						



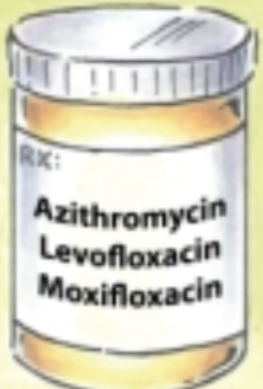
HA: Hemagglutinin  
NA: Neuraminidase  
M2: M2 Protein

Neuraminidase Inhibitors Target



# Legionnaires' Disease

S	M	T	W	T	F	S
Incubation: 2-10 Days						
Outbreaks: Summer/Fall						



Confusion



Fever  
Chills



Headache



Air Conditioner

Productive Cough  
Blood-tinged Sputum  
Hemoptysis

Relative  
Bradycardia

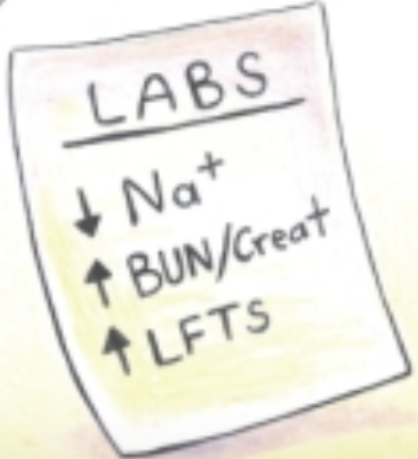
Nausea  
Vomiting

Diarrhea



Contaminated Water

Myalgia



# MERS

Novel Coronavirus

(Middle Eastern Respiratory Syndrome)

S	M	T	W	T	F	S

Incubation:  
2-14 Days



Fever, Chills

Headache



SOB

Nonproductive  
Cough

High  
Mortality

Abdominal  
Pain

Myalgia

Nausea  
Vomiting  
Diarrhea

PCR  
Nasopharyngeal  
Sputum  
BAL  
Serum

SAUDI  
ARABIA  
2012



Do Not Drink



# Psittacosis

(Parrot Fever)

S	M	T	W	T	F	S
Incubation: 5-19 Days						



# SARS

S	M	T	W	T	F	S
Incubation: 2-7 Days			Prodrome			
			↓			
Respiratory Phase (Cough)						



## Reservoirs

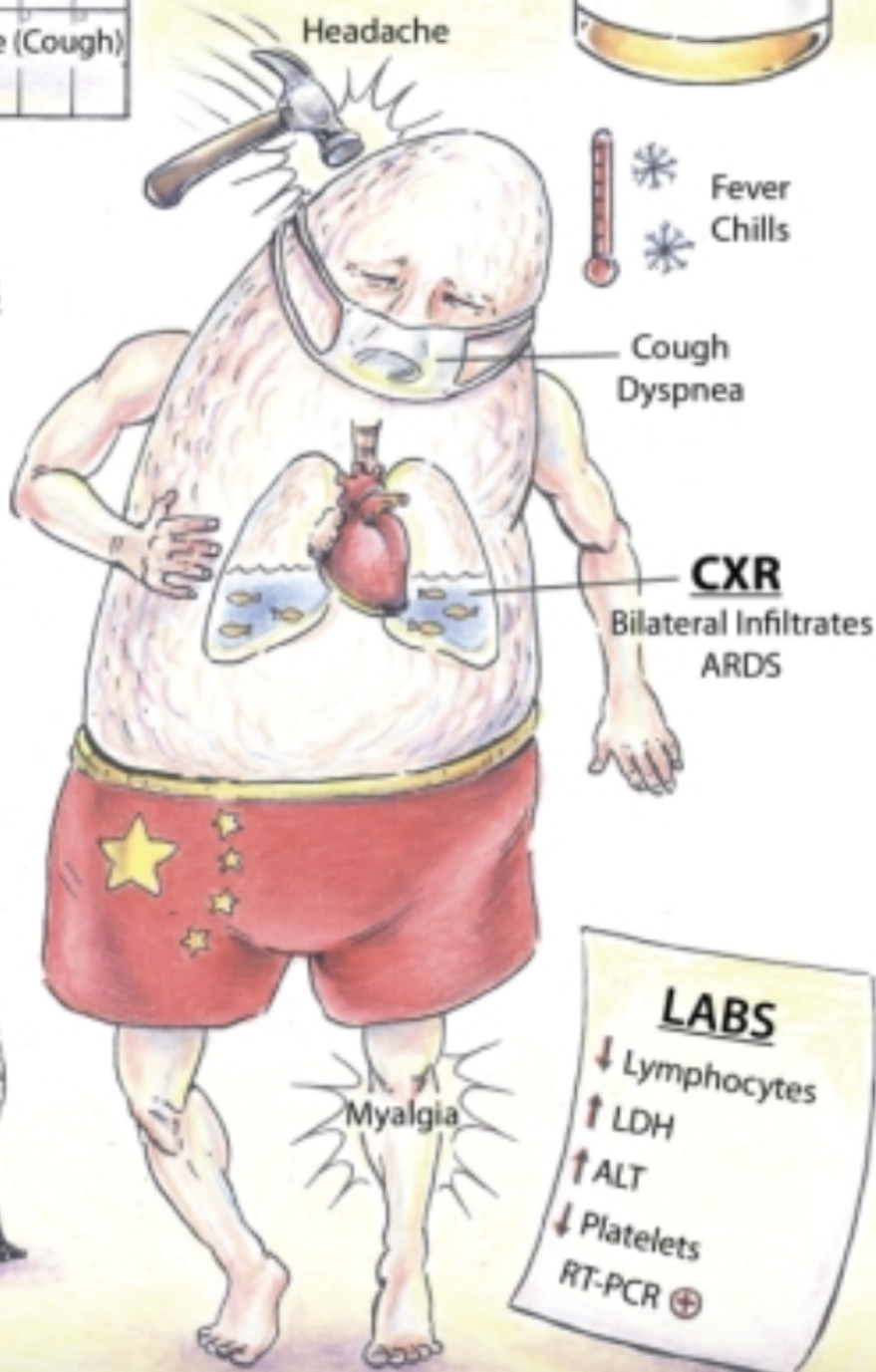


Horseshoe Bat

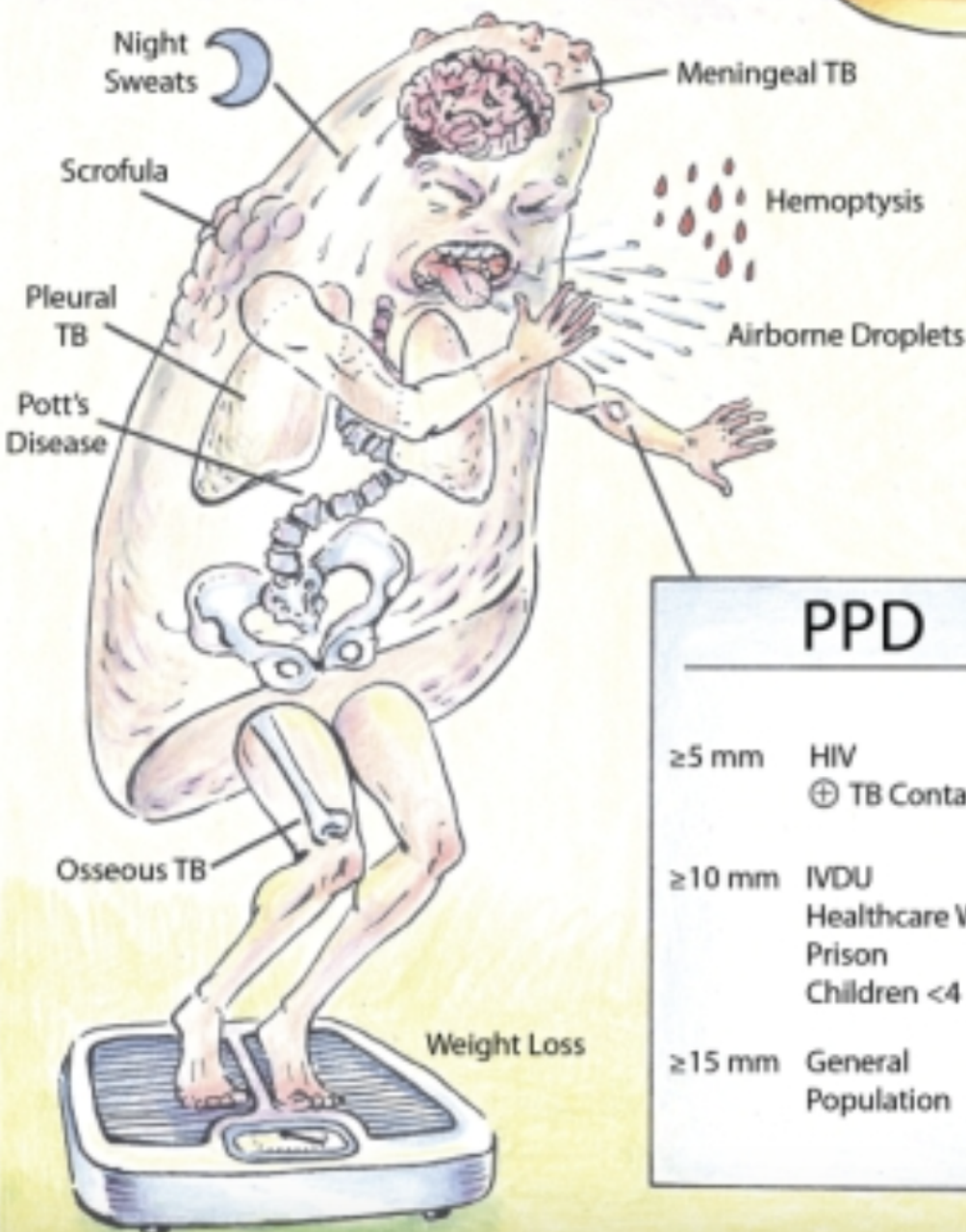
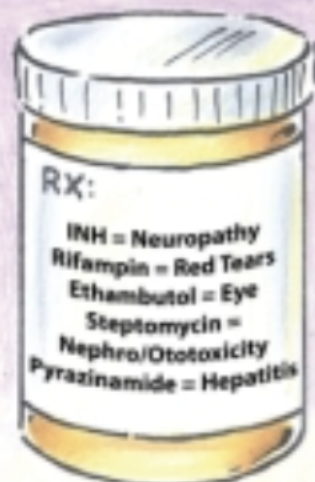
Don't eat me!



Palm Civet



# Tuberculosis



PPD	
≥5 mm	HIV ⊕ TB Contact
≥10 mm	IVDU Healthcare Workers Prison Children <4
≥15 mm	General Population